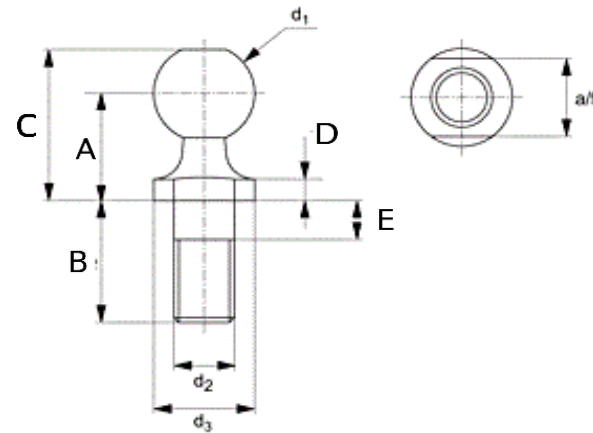


Threaded Ball Studs



Threaded Ball Studs								
Thread - d2	d1	A	d3	B	C	D	E	a/f
M5	8	9	8	10.2	12.5	2.0	4.0	7
M6	10	11	10	12.5	15.5	2.2	4.0	8
M8	13	13	13	16.5	18.5	2.4	5.3	11
M10	16	16	16	20.0	23.0	2.7	7.3	13
M12	16	16	16	20.0	23.0	2.7	7.3	13
M14 x 2.0	19	20	19	28.0	28.5	3.0	10.8	16
M14 x 1.5	19	20	19	28.0	28.5	3.0	10.8	16
M16	19	20	19	28.0	28.5	3.0	10.8	16

Material : Low Carbon Steel Finish : Zinc Plated

INFORMATION AND DRAWINGS PROVIDED ARE FOR REFERENCE ONLY